

**Table of Contents**

**What's In The Box** 1

**Securing the Rail to the Wall** 2

**Prep Partitions** 2

**Place Fixed Shelves** 3

**Plumb and Level the System** 4

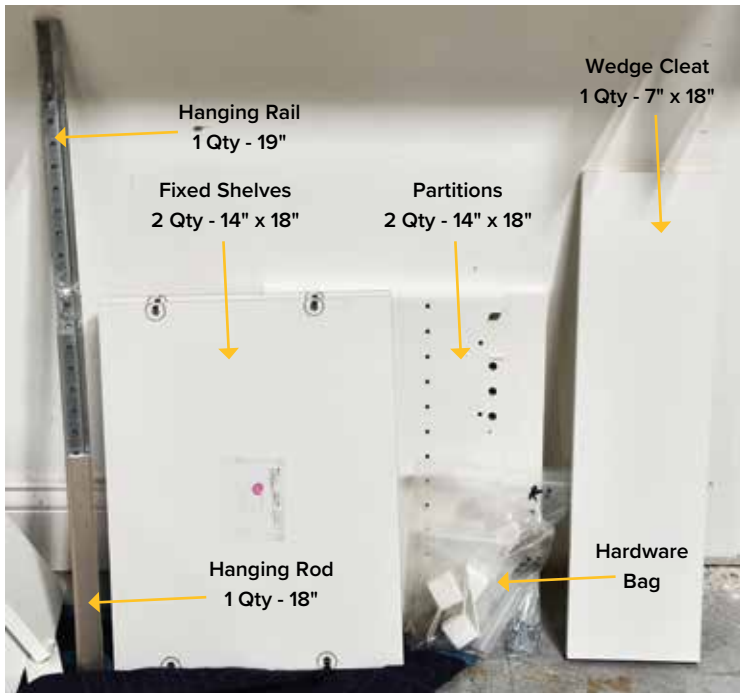
**Attaching the System to the Wall** 4

**Wedge Cleat and Hanging Rod** 4

Shelf & Closet Rod System



**What's In The Box**



**INCLUDED IN HARDWARE BAG**

- ① 2½" Wood Screws  
2 needed, 2 extra



- ② Toggle Anchors  
2 needed, 2 extra



- ③ Toggle Bolts  
2 needed, 2 extra



- ④ Single Push-in Dowels  
12 needed, 2 extra



- ⑤ Pan Head Screw  
2 needed, 1 extra



- ⑥ Bracket Screw  
2 needed, 1 extra



- ⑦ Cams  
(already inserted in shelving)



- ⑧ Zip Anchor  
2 needed, 1 extra



- ⑨ Suspension Brackets  
(right and left)  
1 each



- ⑩ Corner Brackets  
2 needed, 1 extra



- ⑪ Rod Cups  
2 needed for 1 Rod



Ensure all items are accounted for. If any items are missing, please call Customer Service at **1-888-CONTAIN (266-8246)** and report damaged or missing items.

**ADDITIONAL TOOLS NEEDED** (not included) – Protective covering for the floor, #2 Phillips Screwdriver, Level, Tape Measure, Pencil, Drill and the following Drill Bits: 1/2" Spade, #2 Phillips, 1/2" Concrete (optional)

Limited 1-Year Warranty. For warranty details, visit [www.containerstore.com/help/index.html](http://www.containerstore.com/help/index.html)

Even easier to assemble with **BILT®** 3D Instructions. Download today.



SCAN FOR **BILT.**

# WOOD Closet System Installation Instructions

## DETERMINE PLACEMENT

We recommend installing the center point (where the mounting holes are) of the Hanging Rail 81-3/4" above finished floor. This will put the top of your finished solution at the recommended height of 84". If you wish to adjust the preferred height, the center point of the Hanging Rail will be installed 2-1/4" below the top of the preferred height of your solution.

**NOTE: When installing the Rail, ensure the lip of the Rail is on the top and facing out from the wall. The Rail will measure 1/2" shorter than the length of your solution.**

## Step 1 – Securing the Rail to the Wall

Using a stud finder, mark the location of the studs at the height you plan to install the Rail.

**NOTE: Tying into every wood stud is strongly recommended, especially where Partitions hang. If there is no stud within 4" of either side of a Partition, you must use the Toggle Anchors. You must secure the Rail to at least 1 wood stud.**

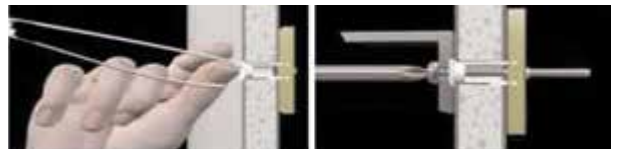
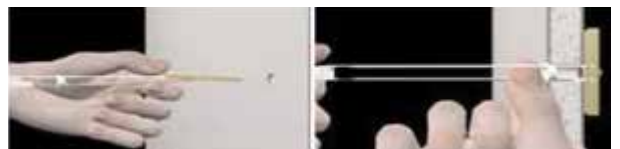
**NOTE: If you have metal studs, you must install 4 Toggle Anchors per rail, starting 2 holes in from the end. Install the other 2 Toggle Anchors within 4" of each Partition.**

Position the Rail at the desired height and using a level, mark the anchor holes and stud holes.

Using a 1/2" bit, drill holes for the Toggle Anchors where needed. Hold metal bar flat alongside plastic straps and slide through the hole. Pull plastic straps toward you until metal bar rests flat behind the wall. Ratchet cap along straps with other hand until flange of cap is flush with wall. Snap off straps level with flange of cap.

Position the Rail on wall and use a minimum of 1, 2-1/2" Wood Screw (#1) per Rail to secure Rail to wood stud, or 4 Toggle Anchors as noted above.

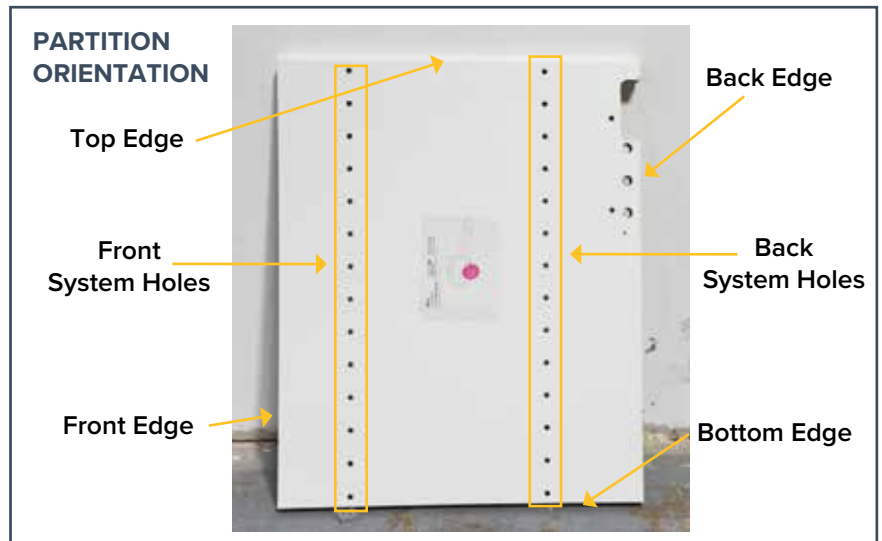
Secure Toggle Bolts (#3) into anchors.



## Step 2 – Prep Partitions

Line up each Corner Bracket so it's flush with the bottom back edge of the Partition. Using a Pan Head Screw (#5), secure the Corner Bracket to the Partition using a drill and #2 Phillips bit.

**NOTE: Leave flap open.**



## Attaching Suspension Brackets

Find the small divot below the 3 Suspension Bracket holes. Align the Suspension Bracket (#9) so the hook end faces the back edge of the Partition as shown in photo. Attach the Suspension Bracket using Bracket Screw (#6) to the Partition. The Bracket Screw will go in at an angle into the divot hole.



Orientation



## Inserting Dowels

Insert 6 Single Push-In Dowels (#4) into each Partition. Four of these will be used to secure your Fixed Shelves. Place 1 Single Push-In Dowel in the uppermost Front System Hole and 1 Single Push-In Dowel at the uppermost Back System Hole.

**NOTE: All Dowels will be on the same side as the Suspension Brackets on each Partition. The 2 remaining Push-In Dowels will be inserted into the two holes directly in front of each Suspension Bracket.**

**NOTE: Five holes up is the lowest the shelf can be placed.**

Dowel Holes in front of Suspension Brackets (#9)

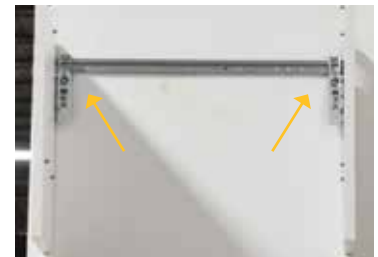


## Hanging Partitions

Align Partition so Rail falls inside notch in Partition. Slightly lift to hook Suspension Bracket behind the lip of the Rail. The Suspension Brackets will be on the inside of your solution.

**NOTE: You may need to loosen the top adjustment screw on the Suspension Bracket to properly hang the Partitions on the rail.**

Suspension Brackets should be on inside of solution



Partitions space 18" apart

## Step 3 – Place Fixed Shelves

Ensure Partitions are 18" apart. Position the Top Shelf so that the cams are aligned with dowels. Push shelf down lightly so dowels insert into cams. Use a #2 Phillips screwdriver to lock cam by turning clockwise to tighten.

Attach the bottom fixed shelf the same way as the top fixed shelf.



Cams are pre-inserted into shelving



Position Cam over Dowel.

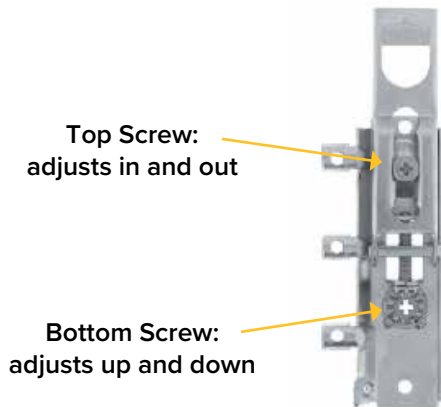


Use screwdriver to lock Cam by turning to the right.

## Step 4 – Plumb and Level the System

Adjust the screws in the Suspension Brackets (#11) to level and plumb your system. Place a level on top of the system to check levelness. Hold the level on the outer side of the system to check for plumb.

**NOTE: Depending on the wall conditions, there may be some visible gapping between the Partitions and the wall, which is often to be expected and should not impact the structural integrity of the system.**



## Step 5 – Attaching the System to the Wall

Use a drill with a #2 Phillips bit to screw the bottom Corner Brackets (#10) to the wall using Zip Anchors (#8). Once secure, close the covers to hide the hardware.

Tighten the Suspension Brackets to the wall by tightening the top adjustment screw. Do not overtighten.



## Step 6 – Wedge Cleat and Hanging Rod

Position Wedge Cleat (Cams facing wall) directly below top shelf as shown, and push firmly into place over the 4 remaining Dowels.

Insert Rod Cups (#11) place in Front System Holes on each Partition at desired height.

Place Hanging Rod into Rod Cups.



Wedge Cleat



Rod Cups



Rod in Rod Cups