

elfa[®] CLASSIC Door & Wall Rack Assembly Instructions

Things You'll Need -
 For Overdoor Hook Method: Level.
 For Into Door or Wall Method: Level, Pencil,
 Drill or Screwdriver, and Hardware.

Component Options:

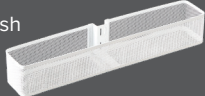
Residential or Commercial Overdoor Hooks with Hardware



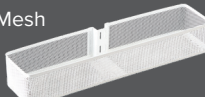
77-3/4" or 94-5/16" Mounted Standard



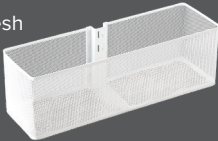
Small Mesh Basket



Medium Mesh Basket

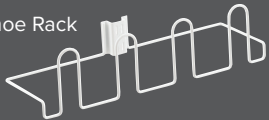


Large Mesh Basket

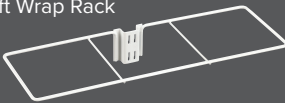


(Baskets are available in mesh and wire. Ask a Specialist for assistance.)

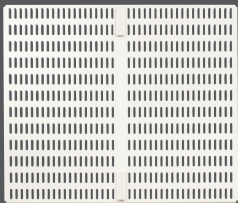
Shoe Rack



Gift Wrap Rack



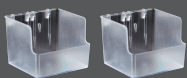
Utility Pegboard



Utility Pegboard Hooks

(Multiple styles to choose from)

Utility Pegboard Boxes
(Multiple sizes to choose from)



Hardware Options:

Package of Ten Wood Screws



Package of Five Drywall Anchors



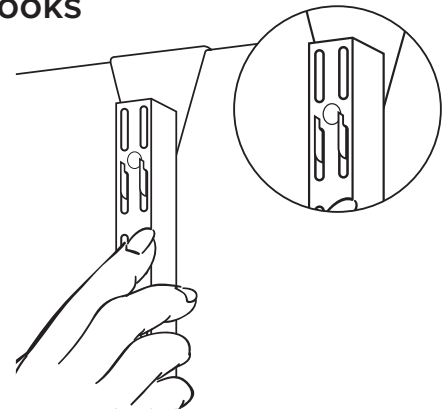
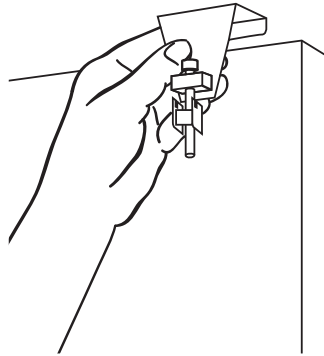
Package of Five Hollow Door Anchors and Screws



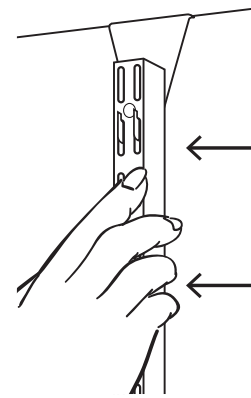
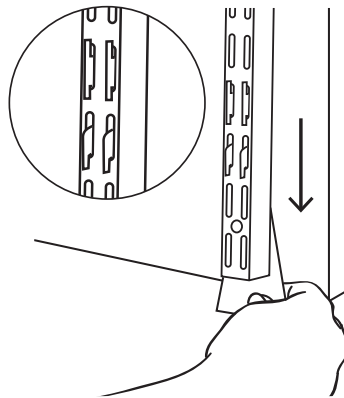
HELPFUL TIP

- If not using the overdoor hooks, please ask for the best installation hardware for your specific needs.

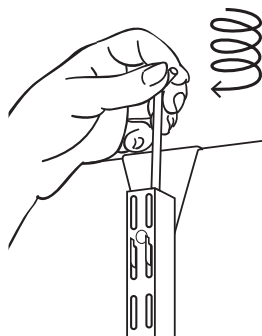
Installing with Overdoor Hooks



- Place the short Residential or Commercial Overdoor Hook (that has a bolt) over the top of the door.
- Fit the second set of slots on the Standard over the hook.



- Attach the long Residential or Commercial Overdoor Hook to the Standard under the bottom of the door.
- Pull down to lock it in position. The bottom hook should not be tight against the door.
- Using a Level, adjust the Standard until it is square to the floor.



- Use the included Allen Wrench to tighten the top bolt.

elfa[®] CLASSIC Door & Wall Rack Assembly Instructions (continued)

Complete Solutions:

Installed Using Overdoor Hooks



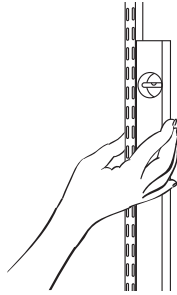
Installed into a Door



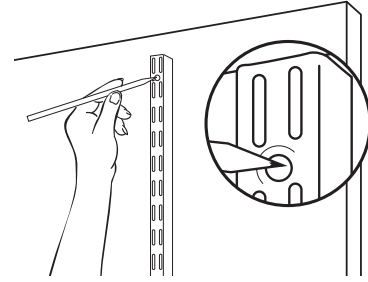
Installed into a Wall



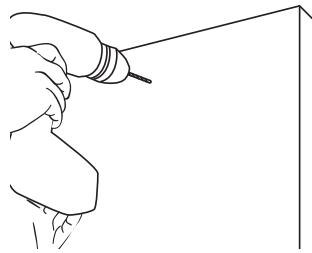
Installing into a Solid Door or Wall Studs



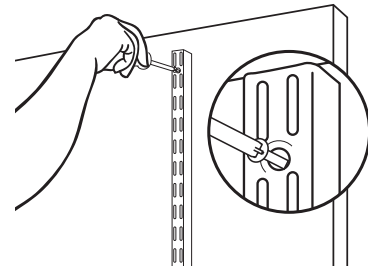
- Position Standard on door or wall. Using a Level, adjust the Standard until it is square to the floor.



- Mark screw placements.

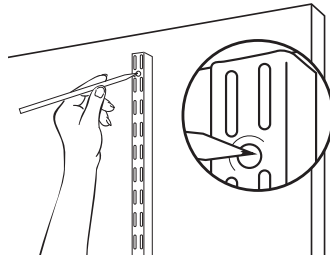


- Drill a pilot hole with a 1/10"/2.5mm drill bit at each marked spot.

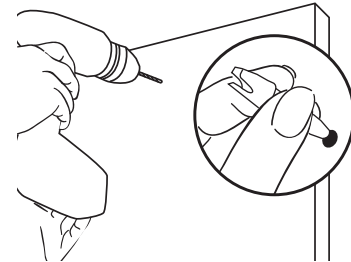


- Screw Standard to the door or wall with wood screws.

Installing into a Hollow Door or Drywall



- Position Standard on door or wall. Using a Level, adjust the Standard until it is square to the floor.
- Mark screw placements.



- Drill holes using a 1/4"/7mm drill bit and insert Hollow Door Anchors or Drywall Anchors.
- Insert screws into anchors and tighten.

Adding Accessories

- Align the tabs on the back of Accessory with the slots on the Standard.
- Pull down to hook in place.
- Repeat the process with all Accessories.

