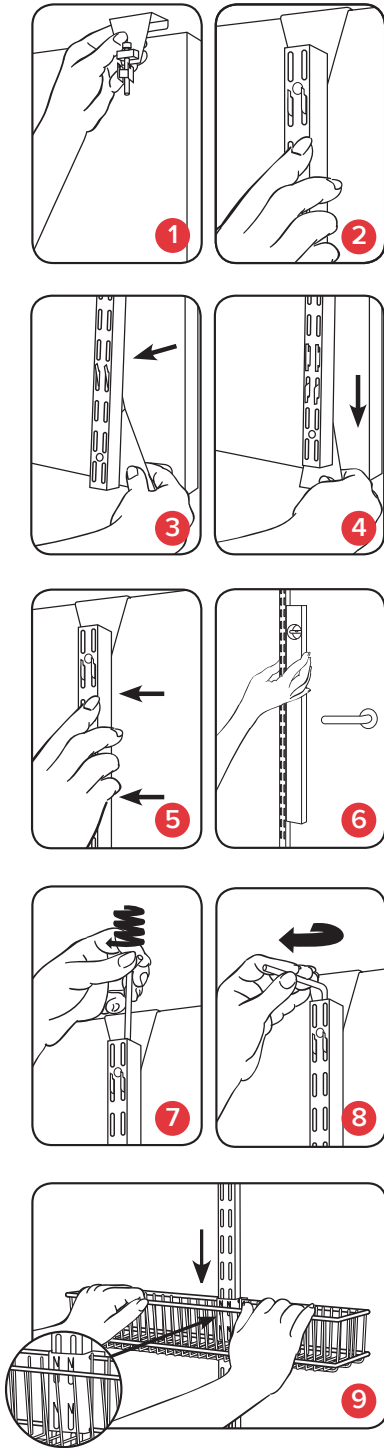
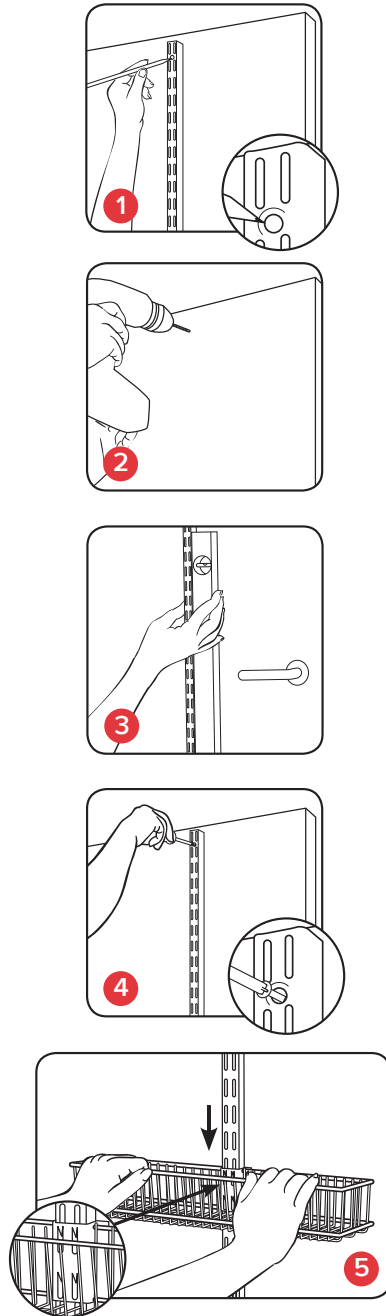
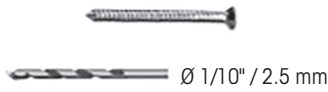


ELFA UTILITY DOOR & WALL RACK SYSTEM ASSEMBLY INSTRUCTIONS

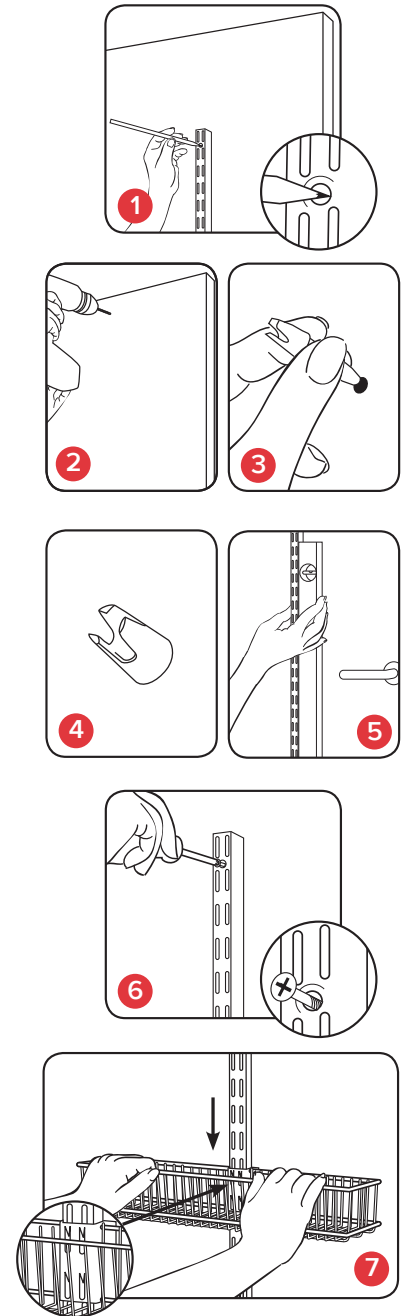
OVERDOOR



SOLID DOOR



HOLLOW DOOR



Overdoor System

- STEP 1** Choose white or platinum.
- STEP 2** Choose an overdoor hook: residential or commercial. If installing over a door, use the 77-3/4" Elfa Mounted Standard. For an 8' door you will need the 94-5/16" Mounted Standard.
- STEP 3** Add baskets, racks or boards to customize your solution.

Door- or Wall-Mounted System

- STEP 1** Choose white or platinum.
- STEP 2** Choose your hardware: If mounting on a wall, please ask for the best installation hardware for your specific needs.
- STEP 3** Choose the Elfa Mounted Standard length that best fits your space.
- STEP 4** Add baskets, racks or boards to customize your solution.