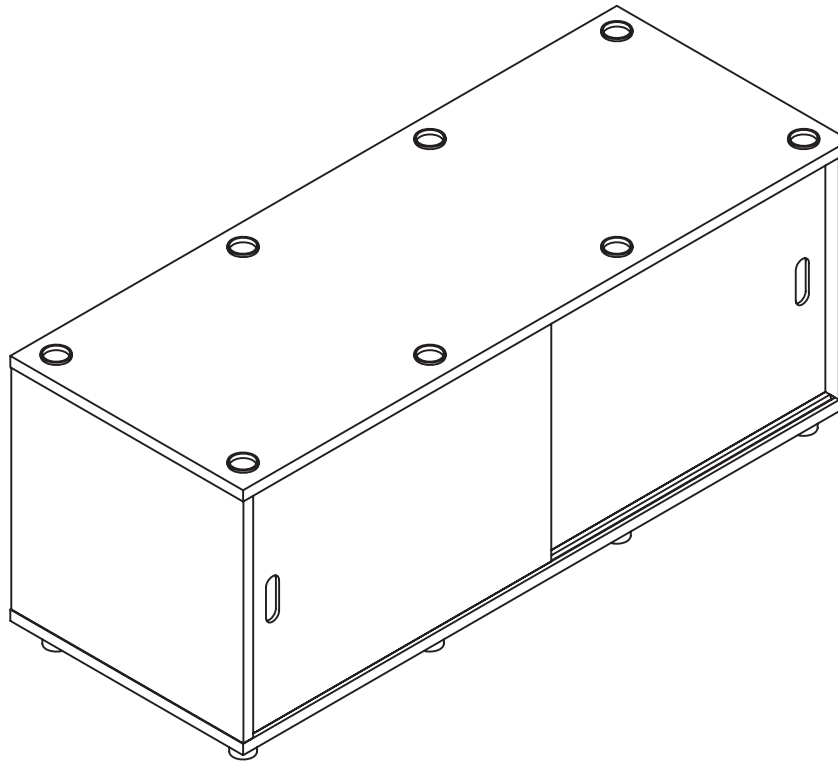
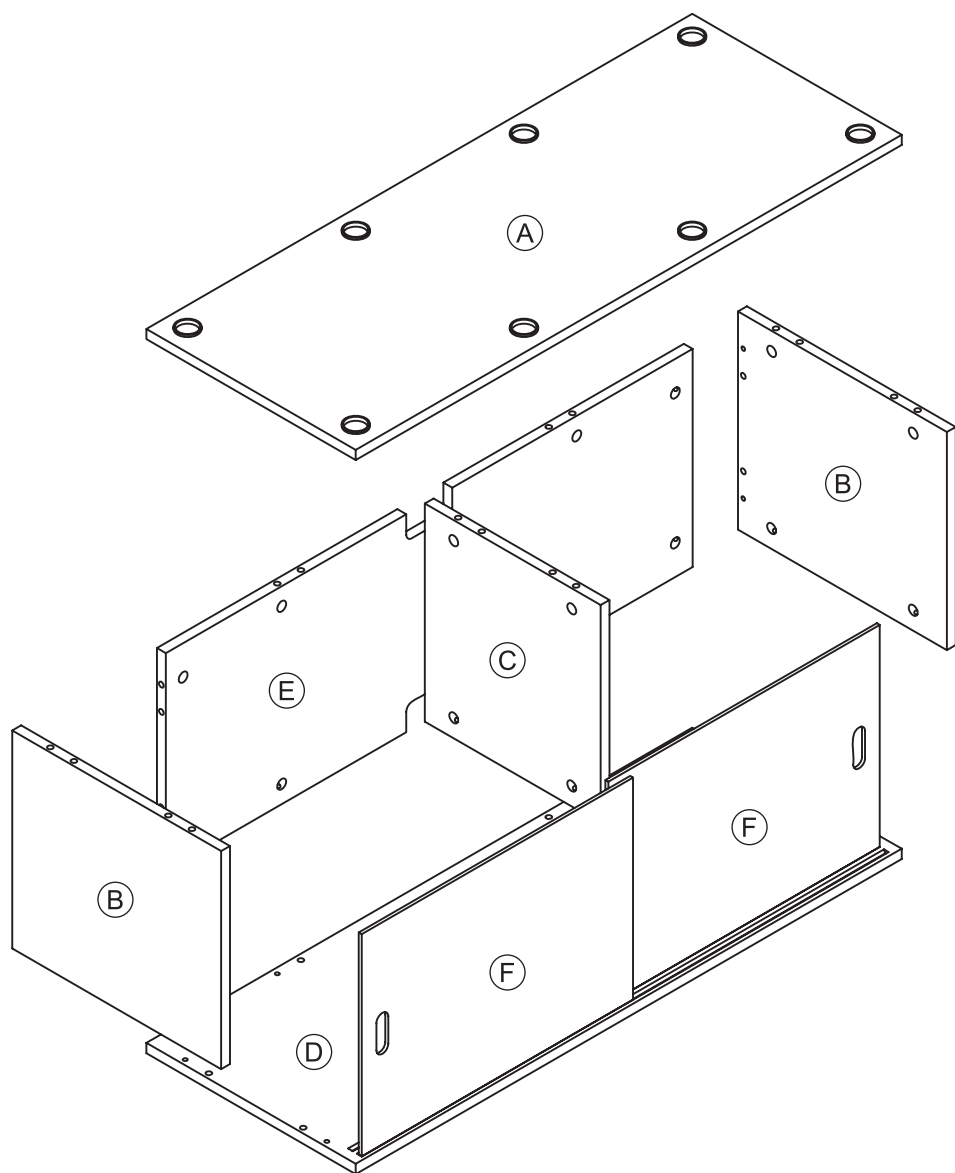


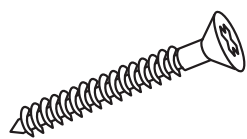
## Assembly Instructions Vario Stacker with Door





<b>A</b>	<b>Top Panel</b>	<b>1</b>
<b>B</b>	<b>Side Panel</b>	<b>2</b>
<b>C</b>	<b>Partition Panel</b>	<b>1</b>
<b>D</b>	<b>Bottom Panel</b>	<b>1</b>
<b>E</b>	<b>Back Panel</b>	<b>1</b>
<b>F</b>	<b>Door</b>	<b>2</b>

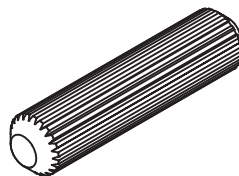
Please review the hardware listed on the next page as well as individual components of this product. As you unpack and prepare for assembly, place the contents on a carpeted or padded area to protect them from damage.



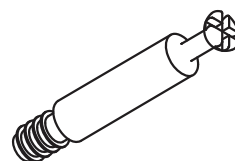
**H1 x 8**  
**FLAT HEAD**  
**SCREW**



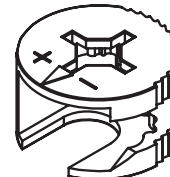
**H2 x 8**  
**FOOT**  
**STANDOFF**



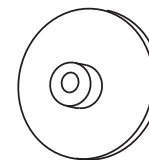
**H3 x 20**  
**WOODEN**  
**DOWEL**



**H4 x 20**  
**CAM BOLT**

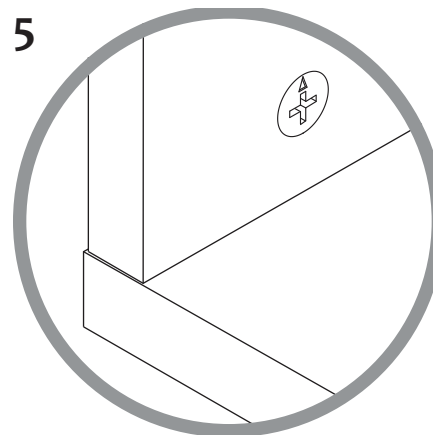
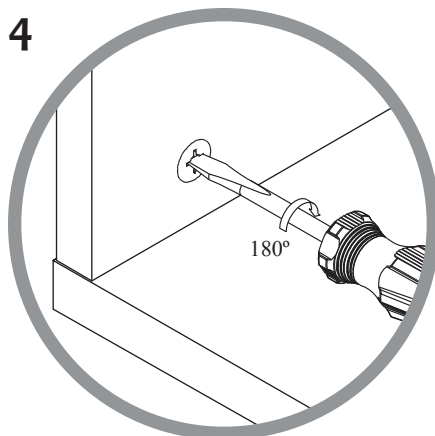
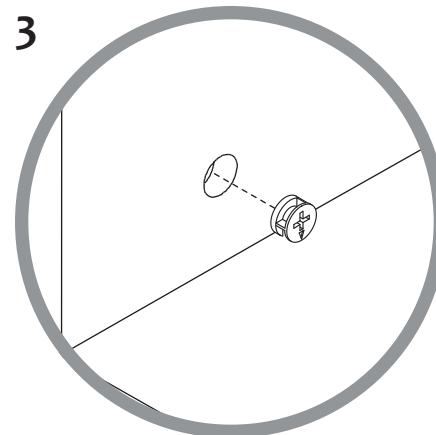
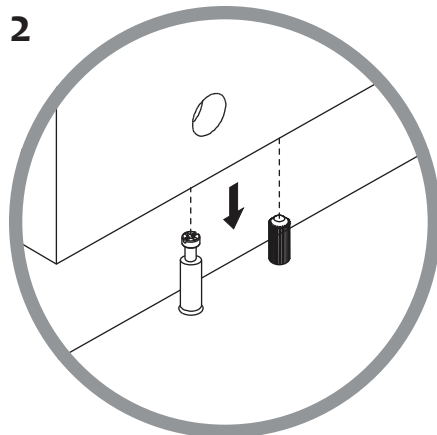
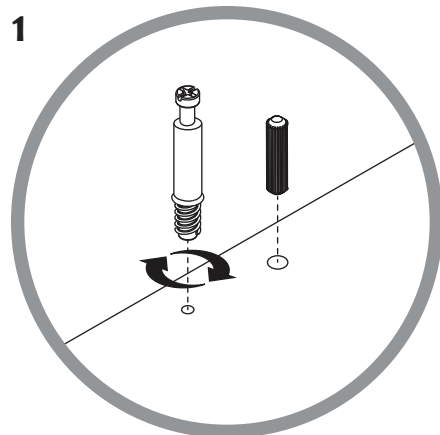


**H5 x 20**  
**CAM**

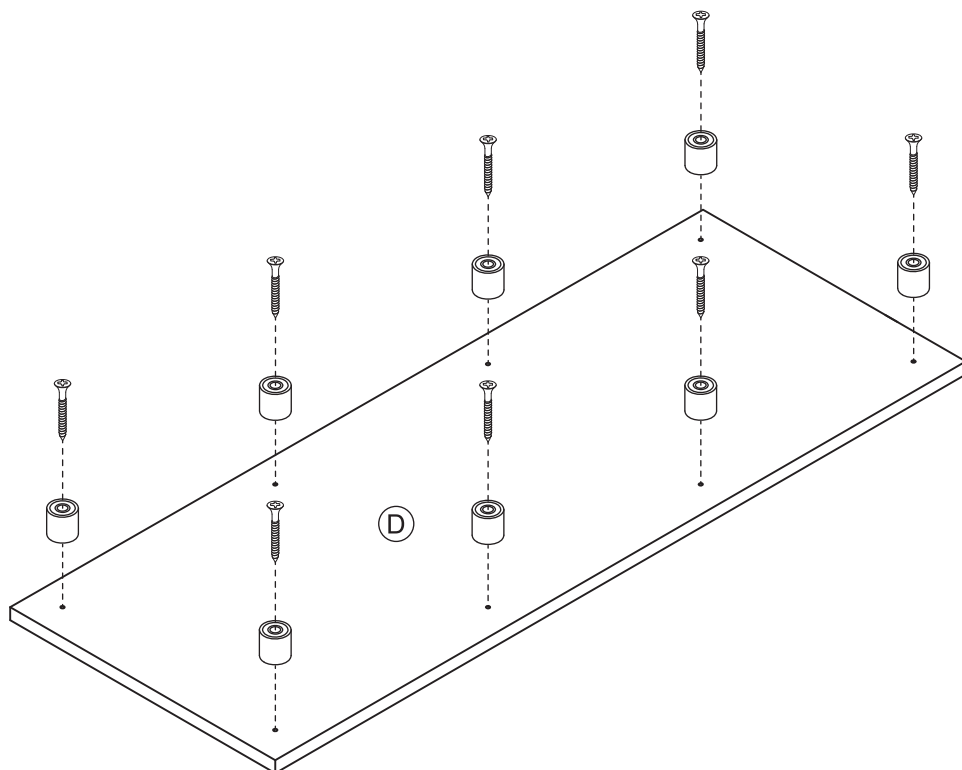


**H6 x 20**  
**CAM COVER**

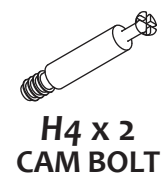
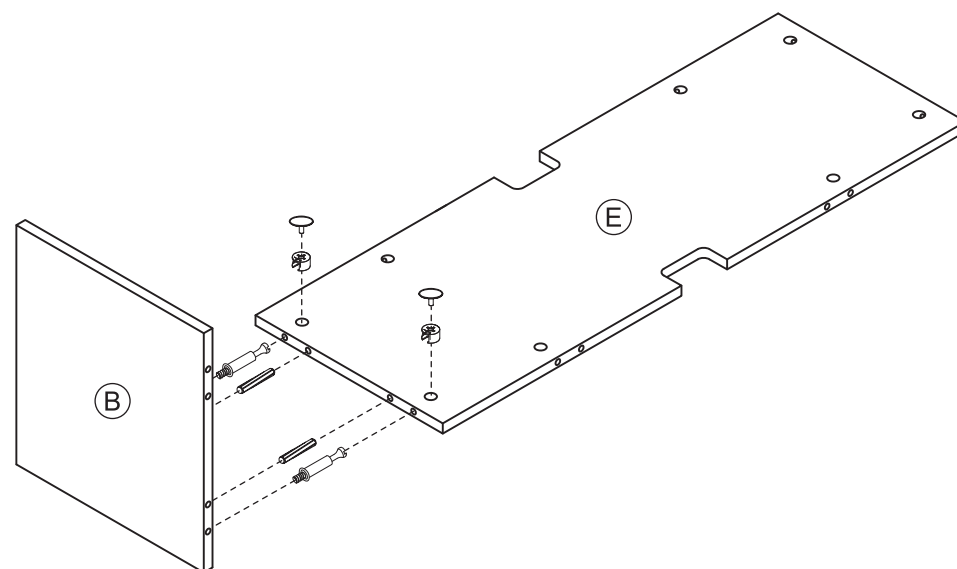
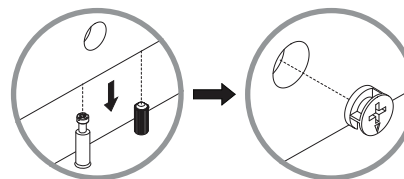
**TOOLS REQUIRED:**      **PHILLIPS SCREW DRIVER / Mallet**



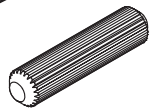
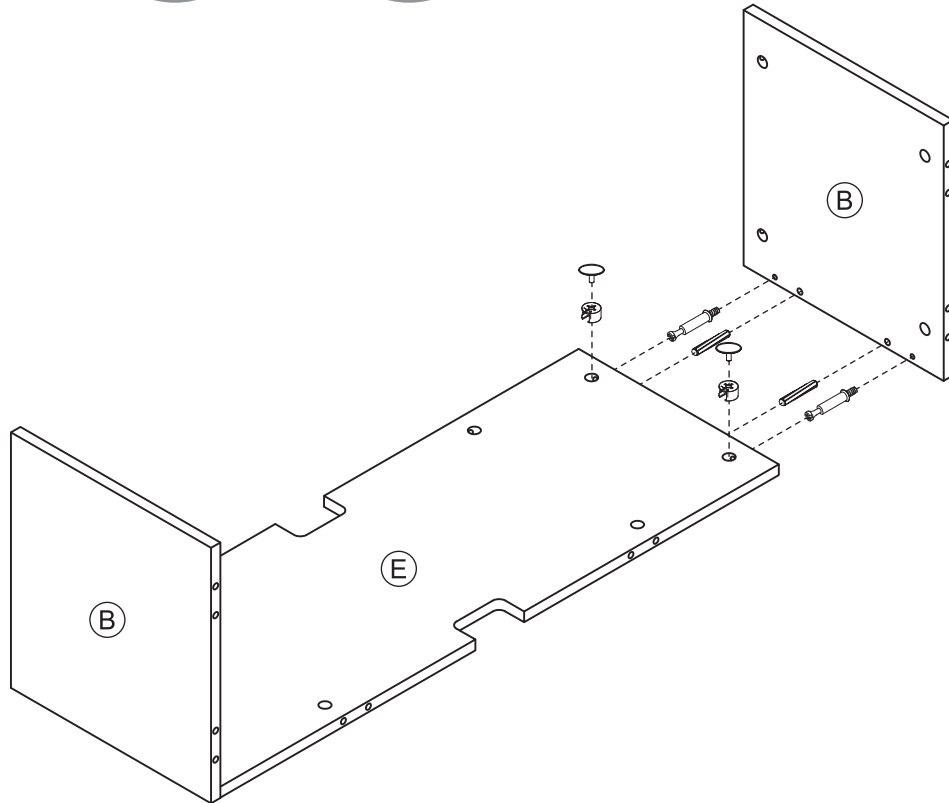
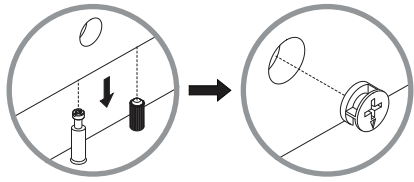
## STEP 1



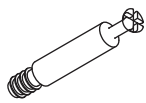
## STEP 2



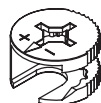
### STEP 3



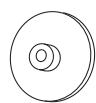
**H3 x 2**  
**WOODEN**  
**DOWEL**



**H4 x 2**  
**CAM BOLT**

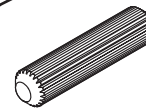
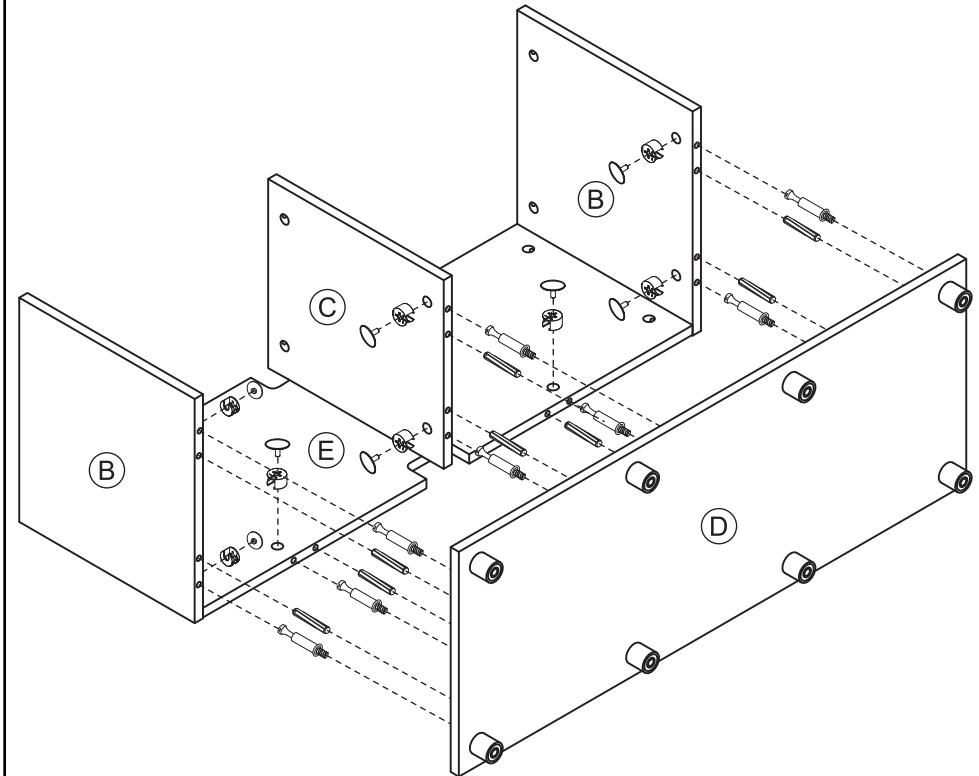
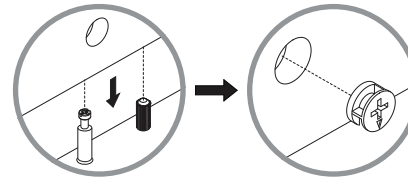


**H5 x 2**  
**CAM**

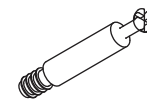


**H6 x 2**  
**CAM**  
**COVER**

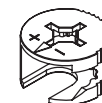
### STEP 4



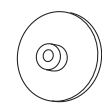
**H3 x 8**  
**WOODEN**  
**DOWEL**



**H4 x 8**  
**CAM BOLT**

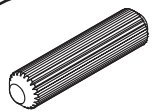
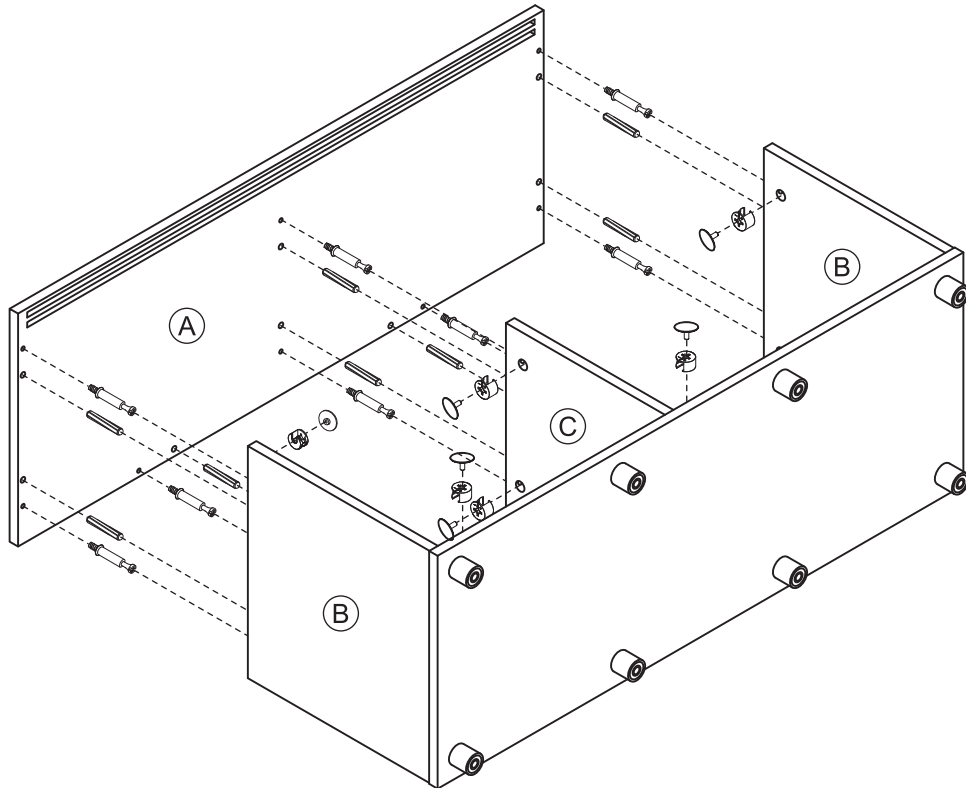
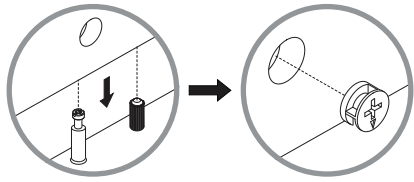


**H5 x 8**  
**CAM**

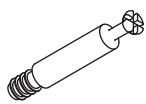


**H6 x 8**  
**CAM**  
**COVER**

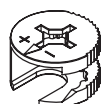
## STEP 5



**H3 x 8  
WOODEN  
DOWEL**



**H4 x 8  
CAM BOLT**

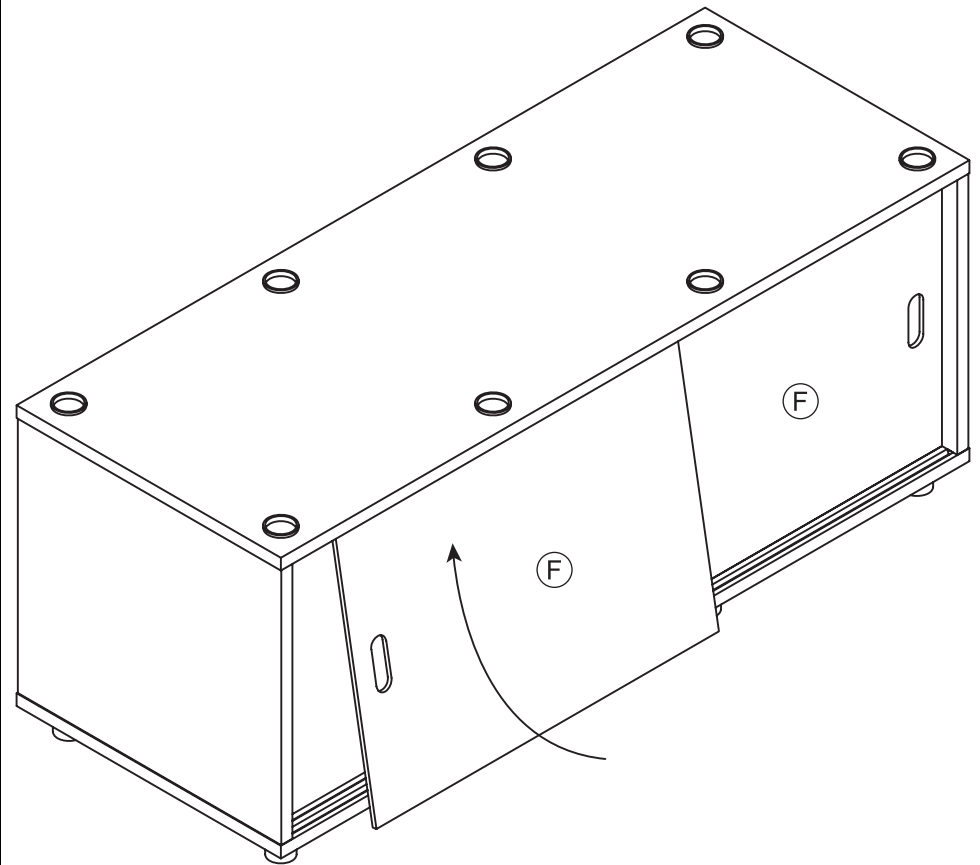


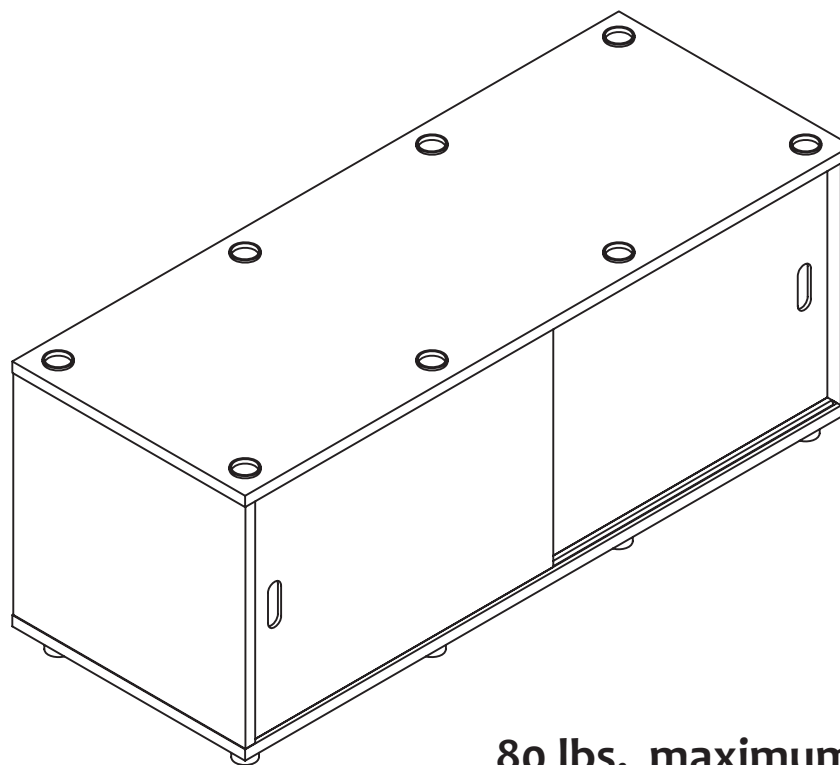
**H5 x 8  
CAM**



**H6 x 8  
CAM  
COVER**

## STEP 6





**80 lbs. maximum**

WARNING: Do not exceed the recommended weight limits on the designated panels. Exceeding these limits could cause sagging, possibly resulting in failure of product or bodily injury. Severe injury may occur if furniture tips over. Never allow children to climb or play on this product. Place heaviest items in lower storage area and as far back as possible, never overload product.